

# Missouri Outdoor Recreational Access Program (MRAP) Area Map



**Area Names: Highway Y, Wright west**

**County: Macon Combined size: 259 acres**

**Township: 56N, Range: 13W, Sections: 27,34,35**

**Public Access Type: Small Game & Turkey Hunting**

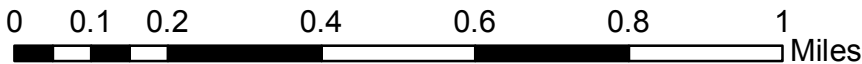
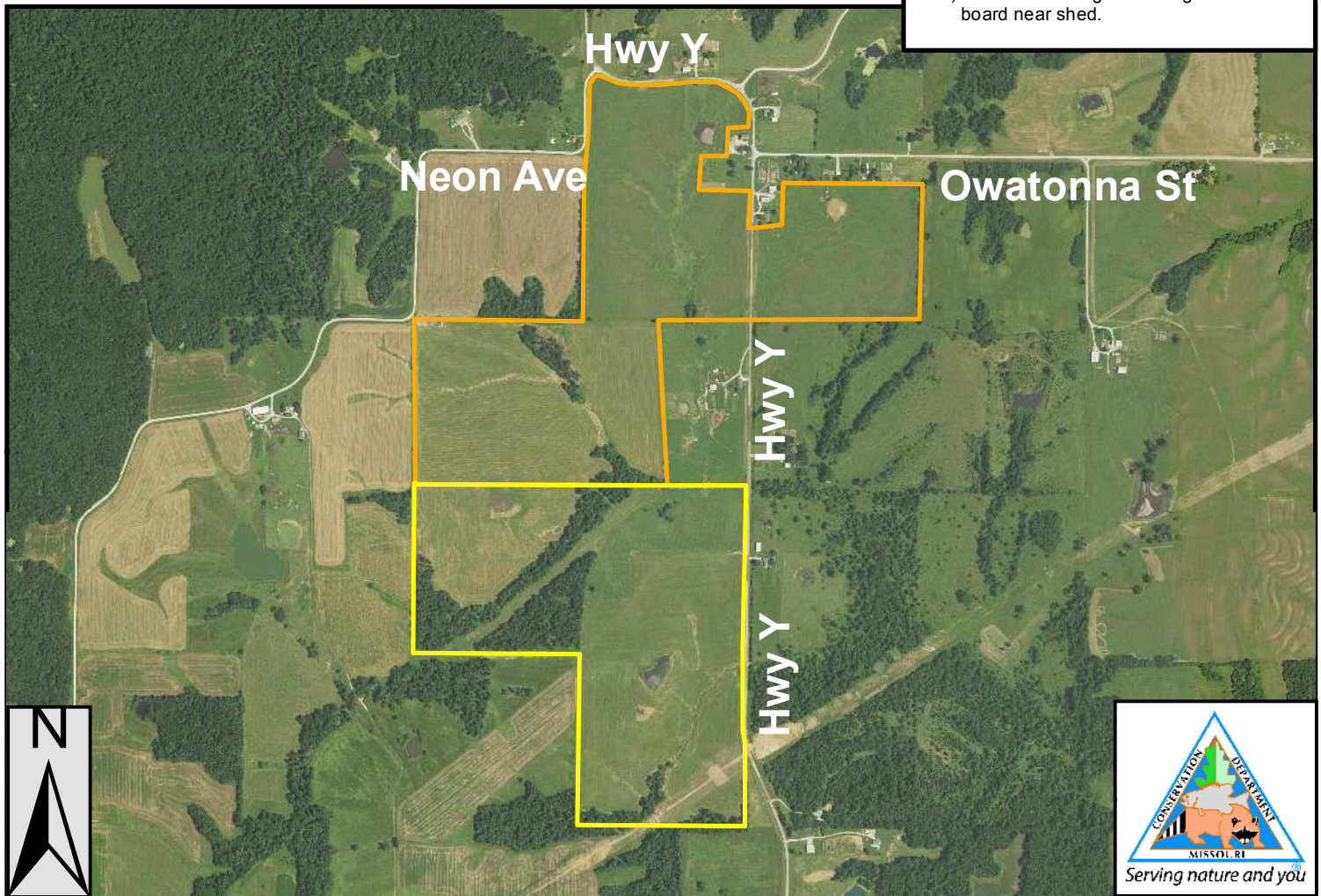
**The following small game species may be pursued: turkey, rabbits, squirrels, quail, pheasant, rails, snipe, doves, woodcock, frogs and waterfowl**

**Area open 1 hr before sunrise to 1 hr after sunset**

### Macon County

Directions From Macon:

- 1) Follow Hwy 63 south approx. 7 miles.
- 2) Turn left onto Hwy Y and go east approx. 7.5 miles.
- 3) Turn left into first private drive after passing Owatonna St.
- 4) Park on side of gravel. Registration board near shed.



- \*PLEASE RESPECT PRIVATE PROPERTY
- \*WALK-IN HUNTING ONLY
- \*ALL OTHER ACTIVITIES PROHIBITED
- \*PARKING ON ROADSIDE ONLY
- \*STAY ON MRAP PROPERTY; NO TRESPASSING
- \*NO TRAPPING
- \*NO LITTERING (INCLUDING SPENT SHELLS)
- \*NO TARGET SHOOTING, CAMPING, OR ALCOHOL
- \*NO FIREWORKS, BIKING, HORSEBACK RIDING
- \*DO NOT OPEN GATES & AVOID DAMAGING FENCES
- \*NO EQUIPMENT OR GEAR MAY BE LEFT OVERNIGHT

### Legend

- Parking and Registration
- Highway Y Tract
- Wright West Tract

**SPECIAL REGULATIONS APPLY. GO TO: MDC.MO.GOV/MRAP**